

# Consideration of the Natural Environment

Alex Fradley – Principal Planner  
Peter Jermany – Principal Planner

Borough Council of  
King's Lynn &  
West Norfolk



# Contents

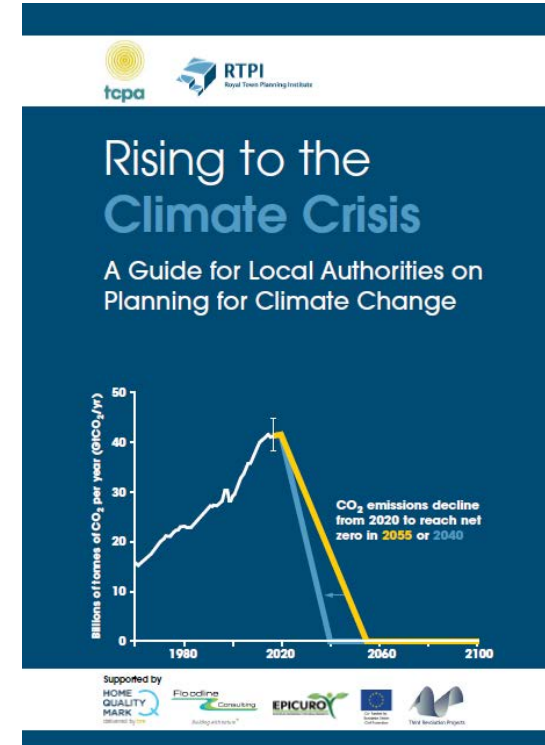
- **Requirements**
- **Elements Covered in the Plan**
- **Elements to Consider**



# Requirements

# Legislation

- Planning & Compulsory Purchase Act 2004 – duty re mitigation/adaptation
- Climate Change Act 2008 – evidence base – priorities for action/adaptation
- Flood & Water Management Act 2010 – threats of flooding/water scarcity
- Planning Act 2008 – policies for climate mitigation/adaptation
- Planning & Energy Act 2008 – powers to source local renewable energy
- Neighbourhood Planning Act 2017 – las to set out strategic priorities e.g. energy/adaptation



# Policy

- **NPPF** (rev. 2019) - ‘mitigating/adapting to climate change inc. moving to a low carbon economy’ = core planning objective  
Glossary (see also LPR glossary):
- **Climate change adaptation:** Adjustments to natural or human systems in response to the actual or anticipated impacts of climate change, to mitigate harm or exploit beneficial opportunities.
- **Climate change mitigation:** Action to reduce the impact of human activity on the climate system, primarily through reducing greenhouse gas emissions.
- **PPG (2014) - climate change** (not yet revised)
  - **renewable and low-carbon energy** – planning for onshore wind, photovoltaics, heat networks, etc. (part revised 2015)
  - **flood risk and coastal change** (not yet revised)



# Other Government Policies

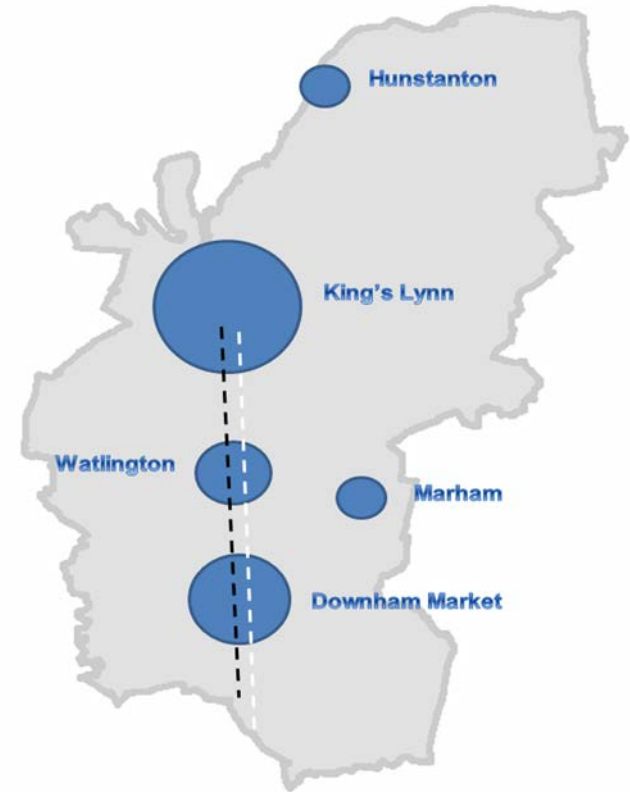
- UK 2<sup>nd</sup> Climate Change Risk Assessment 2017
- Industrial Strategy 2017
- UK Climate Projections 2018 (UKCP18)
- Committee on Climate Change – ‘Net Zero’ Report May 2019
- 25 Year Environment Plan 2018
- Clean Growth Strategy 2017 (amend 2018)



# Elements Covered

# Growth Strategy

- Growth is broadly concentrated at higher order settlements
- This should assist in limiting travel / trips to employment/services/facilities. Support daily life
- Also this is where public transport in the form of buses (inc. school buses) & trains are more prevalent





# Site Appraisal

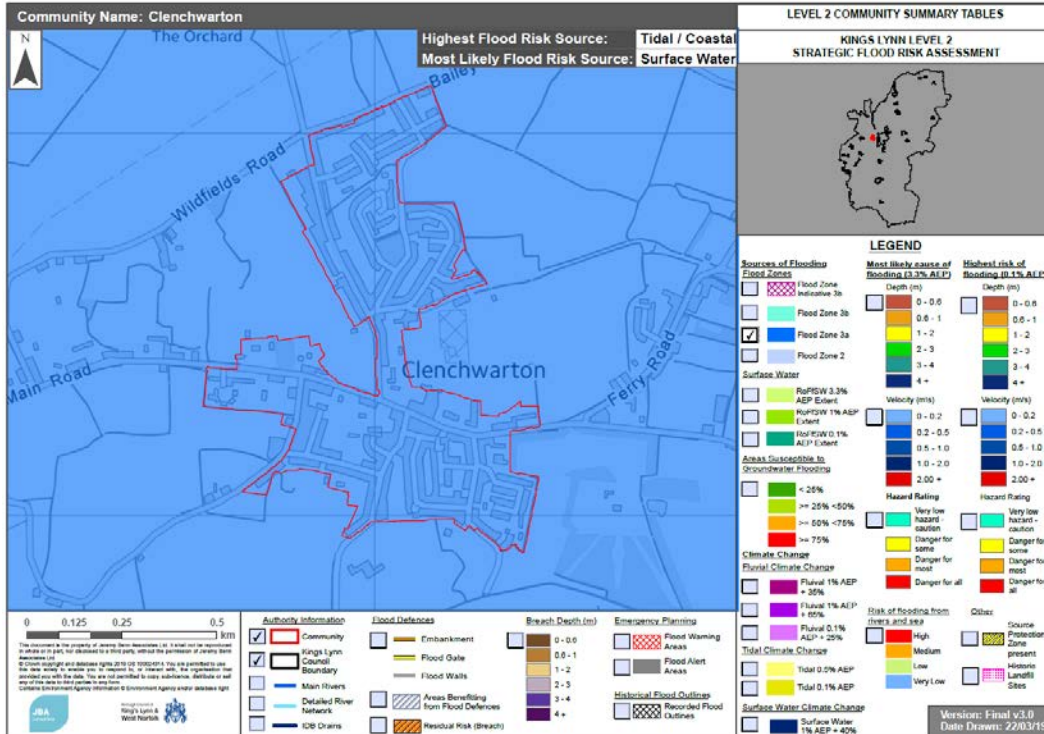
- Housing & Economic Land Availability Assessment
- Sustainability Appraisal including Strategic Environmental Assessment
- Habitats Regulation Assessment



# SFRA Level 1 & 2

## King's Lynn and West Norfolk Strategic Flood Risk Assessment

Final Report: Level 1 – Executive Summary Only  
November 2018

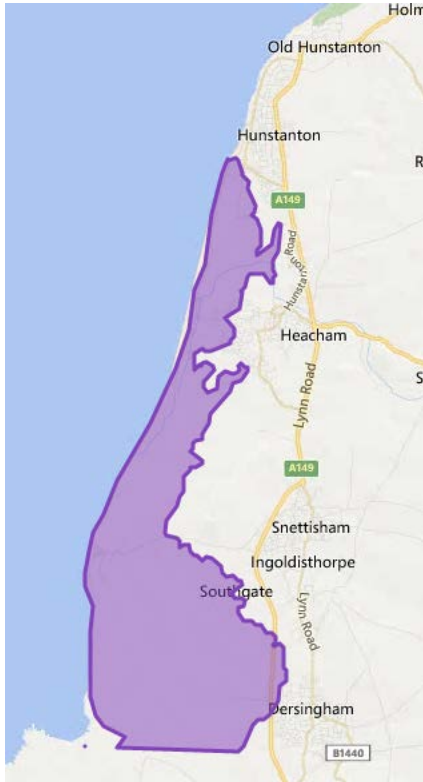


### Level 2 Community Level Guidance Tables

Community details	Community Flood Risk Summary	Clenchwarton	
		Highest risk flooding mechanism	Tidal / Coastal
recommendations		Most likely source of flooding	Surface Water
		<ul style="list-style-type: none"> <li>Clenchwarton is entirely within an area benefiting from tidal flood defences along the River Great Ouse.</li> <li>Consider contributions to the River Great Ouse tidal defences protecting the settlement.</li> <li>Completely contained in Flood Zone 3a.</li> <li>The Sustainability Appraisal, 2015 highlights that appropriate site mitigation measures will be required as the entire settlement falls within the highest flood risk area.</li> <li>Limited records of historical flooding.</li> <li>Climate change will increase the risk from tidal flooding</li> <li>Consider the impacts of tidal breach.</li> <li>in a major tidal event the community could be completely cut off and emergency planning implications for new development are critical</li> <li>Early consultation with WMA is strongly recommended in this area.</li> </ul>	
		Mapping Information	
Flood Zones		All Flood Zone information has been compiled from the outputs of The Wash, 2018 tidal model	



# Coastal Change Management Area



- No new dwellings, park homes / caravans
- Replacements subject to criteria:
  - Habitable rooms above ground floor
  - Occupational restriction
  - Appropriate design
  - Flood mitigation measures
- Extensions, Change of Use, Seasonal Occupancy & temporary consents all subject to conditions



# **Borough Council of King's Lynn and West Norfolk Natura 2000 Sites Monitoring and Mitigation Strategy**

## **Panel Members:**

- Norfolk Coast Partnership
- Natural England
- Norfolk Wildlife Trust
- Forestry Commission
- Civic Society
- RSPB
- Wash Norfolk EMS
- Norfolk County Council
- Water Management Alliance



# Other Elements

- **Green Infrastructure**
- **Protection of Open Space**
- **Design & Sustainable Development:**

<https://west-norfolk.objective.co.uk/portal/lpr2019/lpr2019?pointId=s1542883454380#section-s1542883454380>



# Norfolk Strategic Planning Framework

## Shared Spatial Objectives for a Growing County and Emerging Statement of Common Ground

March 2018



## Agreements

- Climate resilience
- Reduce greenhouse gas emissions
- Reduce impact from exposure/effects of climate change
- Conserve & enhance environment
- Higher water efficiency standards in areas of water stress
- Importance of AONB
- County wide assessment of recreational pressures on Natura 2000 sites
- County wide Green Infrastructure strategy: protect and enhance

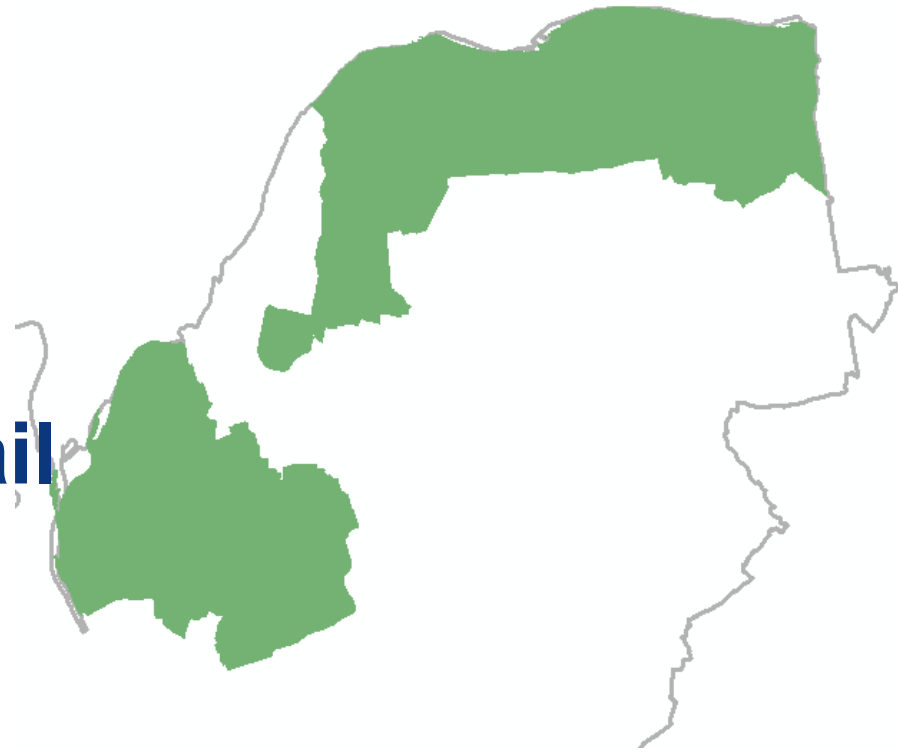
Borough Council of  
King's Lynn &  
West Norfolk



# Elements to Consider

# New Detail

- Draw out and add detail
- Separate AONB policy
- Separate LP17:



<https://west-norfolk.objective.co.uk/portal/lpr2019/lpr2019?pointId=s1542883481756#section-s1542883481756>





# Renewables

- **Further encouragement of renewables**
- **Encouragement for electric vehicle charging points**



# New Build Standards?

- **North Norfolk approach:**

[https://consult.north-norfolk.gov.uk/portal/planning/north\\_norfolk\\_local\\_plan/first\\_draft\\_local\\_plan/local\\_plan?pointId=s15536044792195#section-s15536044792195](https://consult.north-norfolk.gov.uk/portal/planning/north_norfolk_local_plan/first_draft_local_plan/local_plan?pointId=s15536044792195#section-s15536044792195)

- **Brentwood:**

<https://brentwood.moderngov.co.uk/documents/s14757/Appendix%20A%20Pre-Submission%20Brentwood%20Local%20Plan%20Regulation%2019%20October%202018%20Extraordinary%20Council.pdf>



# RTPI launches Resource Planning for Climate Action campaign



“ Without planners or adequate planning systems and policies, there is no realistic way to progress to zero carbon. ”

[https://www.rtpi.org.uk/briefing-room/news-releases/2019/june/rtpi-launches-resource-planning-for-climate-action-campaign/?utm\\_campaign=1509853\\_Highlights%20from%20the%20RTPI%20Planning%20Convention%202019&utm\\_medium=email&utm\\_source=RTPI&dm\\_i=3ES5,WD0D,3Z951K,3DGKA,1](https://www.rtpi.org.uk/briefing-room/news-releases/2019/june/rtpi-launches-resource-planning-for-climate-action-campaign/?utm_campaign=1509853_Highlights%20from%20the%20RTPI%20Planning%20Convention%202019&utm_medium=email&utm_source=RTPI&dm_i=3ES5,WD0D,3Z951K,3DGKA,1)



# Requirements

- **BCKLWN Consideration**
- **Future Changes Nationally**
- **Discussion**